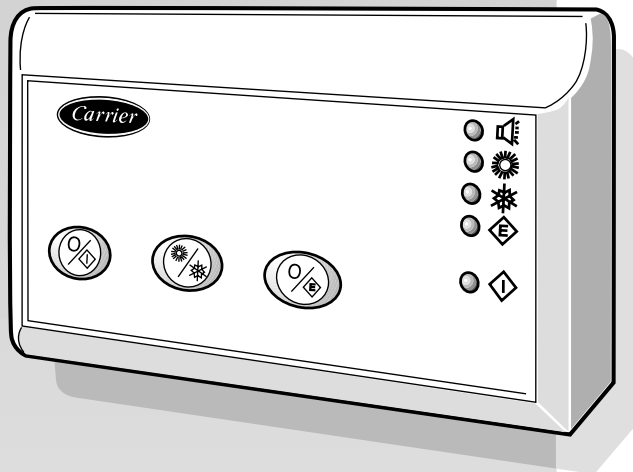




---

# AQUASNAP Remote Controller

---



---

**INSTALLATION MANUAL**

---

# Remote controller

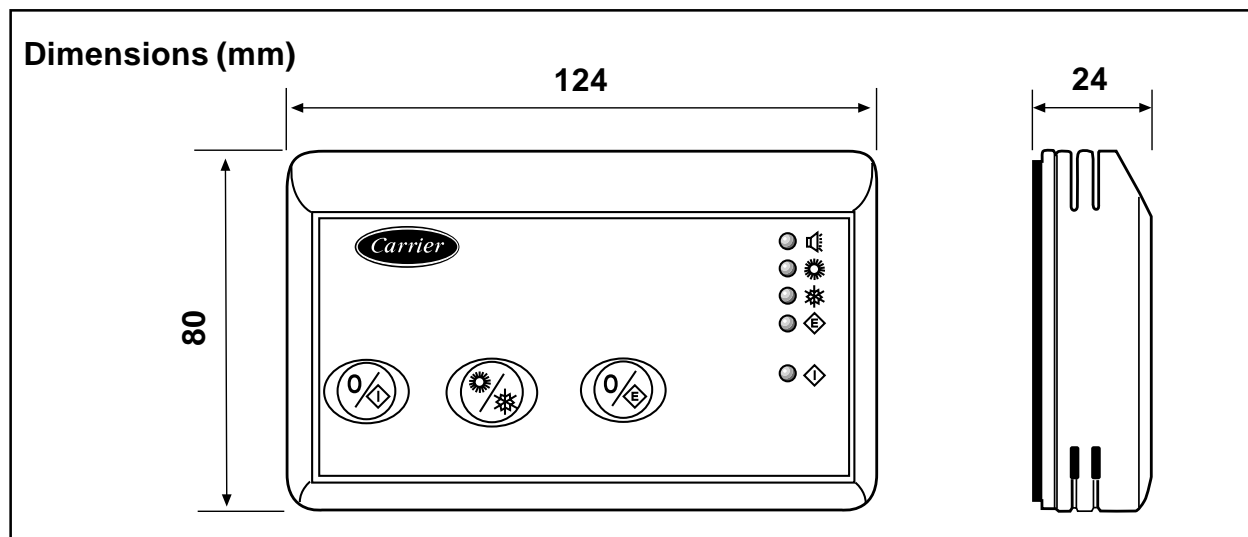
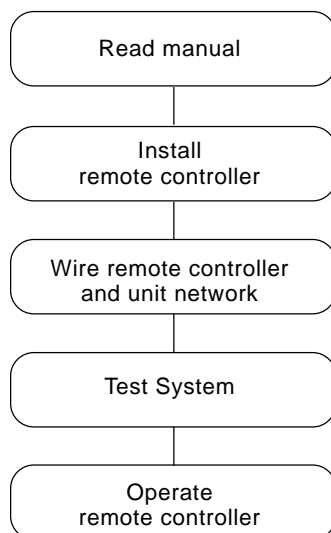
## Installation manual

This control system only operates with 30RA/30RH units.  
For installation instructions of this unit, refer to the relevant manuals.

### Contents

	Page
General information .....	2
Characteristics .....	2
Operating limits .....	2
Choosing the installation site .....	2/3
Electrical connections .....	3
Wiring diagrams .....	4/5
Troubleshooting .....	5

### INSTALLATION FLOW CHART



# Remote controller

## General information and characteristics

### IMPORTANT:

Read the entire instruction manual before starting the installation.

- For trouble-free installation, which should be carried out by a qualified installer, follow the installation chart sequence.
- Follow all current national safety code requirements.
- After installation thoroughly test the system operation and explain all system functions to the owner.
- Leave this manual with the owner for consultation during future periodic maintenance.
- Dispose of packaging material in accordance with local requirements.
- The manufacturer denies any responsibility and warranty shall be void if these installation instructions are not observed.
- Inspect equipment for damage due to improper transportation or handling: file an immediate claim with the shipping company.  
Do not install or use damaged units.
- In case of any malfunctioning turn the unit off, disconnect the mains power supply and contact a qualified service engineer.

### Models

Cooling only / heat pump

Products that the remote controller can interface with 30RA/30RH sizes 005 to 033.

### Wiring

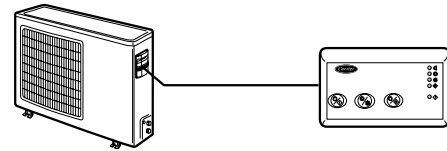
- The remote controller must be connected to the 30RA/RH unit.

### Power supply

Note that the remote controller requires no batteries.

The remote controller will not work without being connected to a 30RA/30RH unit.

### Remote controller



**NOTE 1:** configure the "REM" remote mode on the units 30RA/RH 017-033 (see manual PRO-DIALOG).

**NOTE 2:** alarm and reset code display not available on units 30RA/RH 017-033.

**Only the alarm status is available.**

## Operating limits

The remote control is designed for indoor applications in residential and/or commercial environments.

It is typically applied by fixing to the wall at a height accessible to the operator, without any special limits usually required for analogue equipment with internal temperature sensors.

The operating limits are:

Maximum operating temperature	+50°C
Minimum operating temperature	+0°C
Maximum storage temperature	+70°C
Minimum storage temperature	-10°C
Maximum operating relative humidity	80% r.h.
Maximum storage relative humidity	95% r.h.
Nominal power supply voltage	24 V ac (+/- 10%)

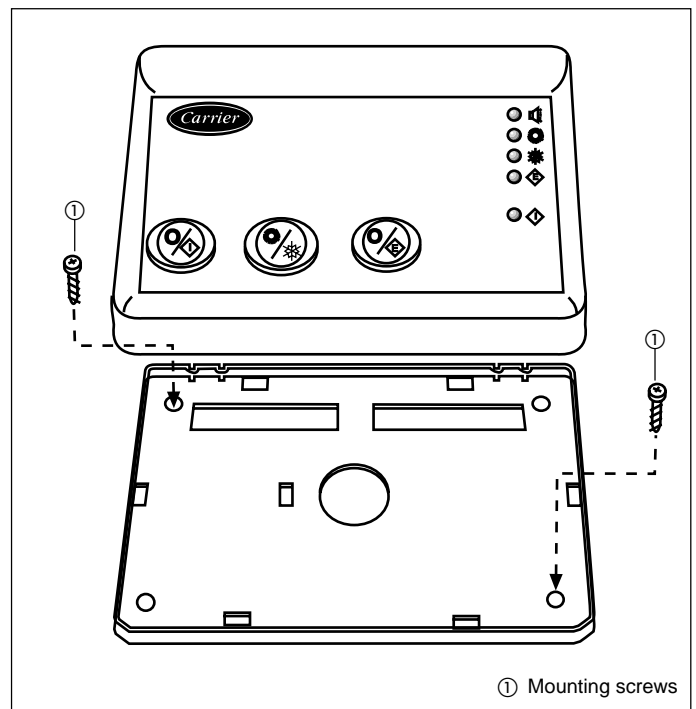
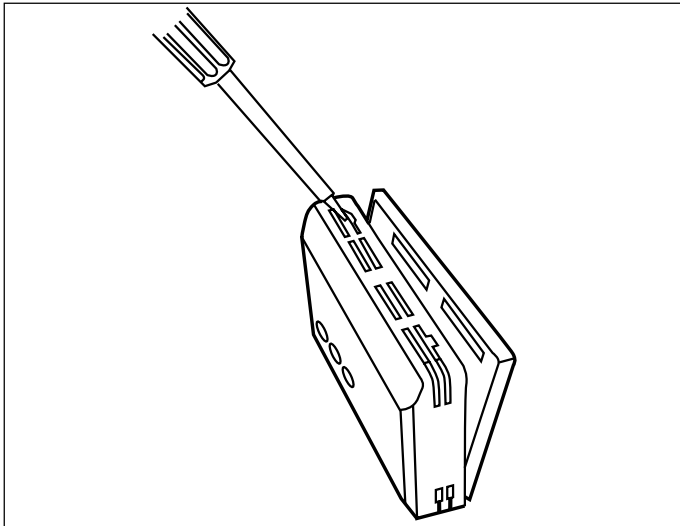
## Choosing the installation site and installation

### Mounting

#### WARNING:

Before installing the remote controller, turn off all power to the unit that will supply power to the remote controller. Electrical shock can cause personal injury or death.

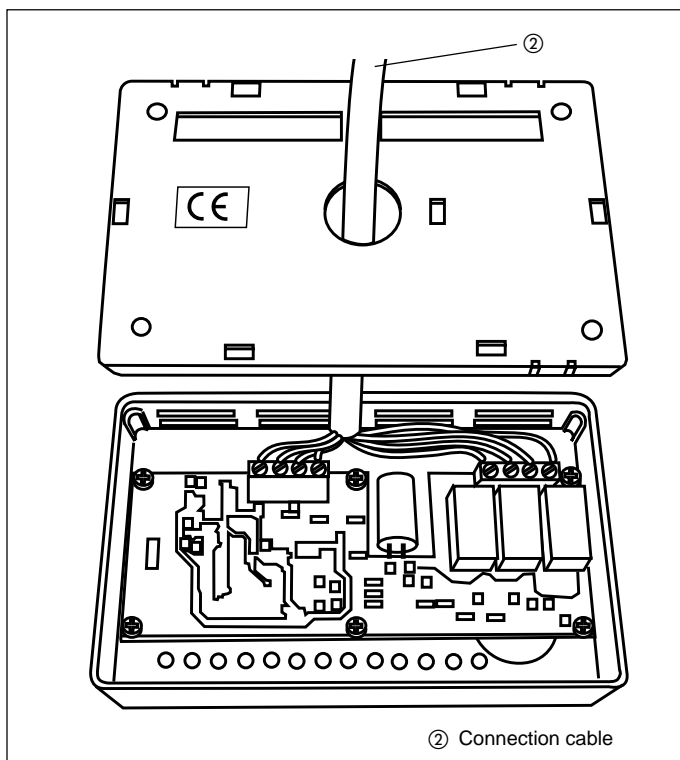
- Turn OFF all power to unit.



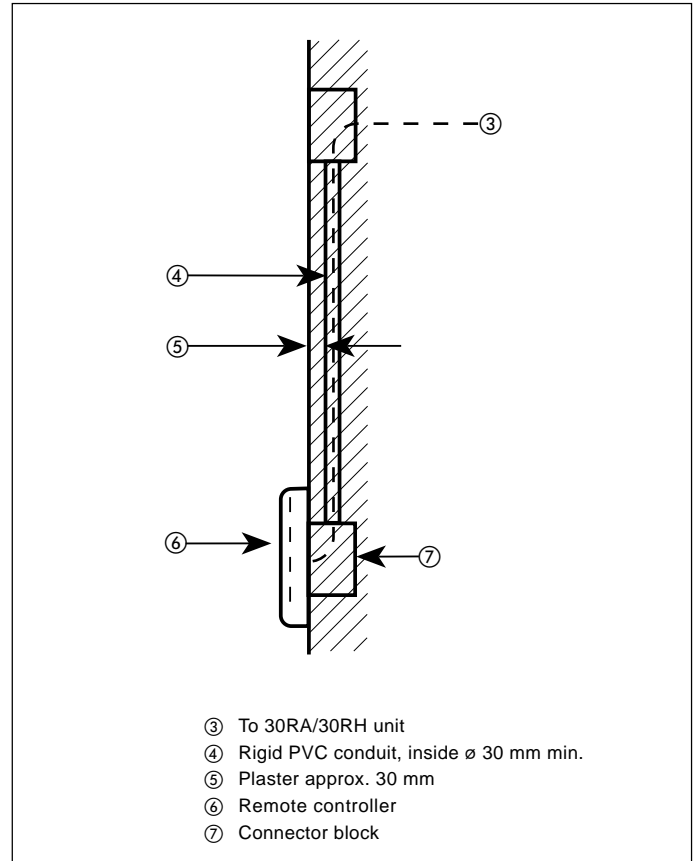
# Remote controller

## Choosing the installation site and installation

- Open the remote controller rear mounting base to expose mounting holes.  
The base can be removed to simplify mounting (snap apart carefully at hinge to separate mounting base from remainder of the remote controller).
- Route the remote controller wires through the large hole in the mounting base.  
Level mounting base against wall (for aesthetic value only).
- Mark the wall through the 2 mounting holes.  
Drill two 5 mm mounting holes in wall where marked.
- Secure mounting base correctly to wall with 2 screws and anchors provided, (additional anchoring holes available for more secure mounting if needed) making sure all wires extend through hole in mounting base.



- Adjust length and routing of each wire to reach the proper terminal in the connector block on the mounting base.  
(Strip only 6 mm of insulation from each wire to prevent adjacent wires from shorting together when connected).
- Match and connect equipment wires to proper terminals in the connector block.  
Both power and communication wires must be connected correctly for proper remote controller operation.
- Push any excess wire into the wall and against mounting base.



- Push the remote controller snap hinge to the base.

## Electrical connections

### Wiring remote controller to the 30RA/RH unit

**WARNING:**

Before connecting any wiring to the remote controller, turn off all power to the unit that will supply power to the remote controller.

Electrical shock can cause personal injury or death.

The remote controller is connected to the unit using the following instructions. Reference wiring diagrams when making these connections.

Power cable and communication connections from the remote controller to the unit (7-conductor cable for 30RA unit, 8-conductor cable for 30RH unit).

To control the operation of a boiler through a 30RA unit, use a 8-conductor cable carrying out the same connections provided for 30RH unit (see wiring diagrams).

### Wiring materials required (supplied by installer)

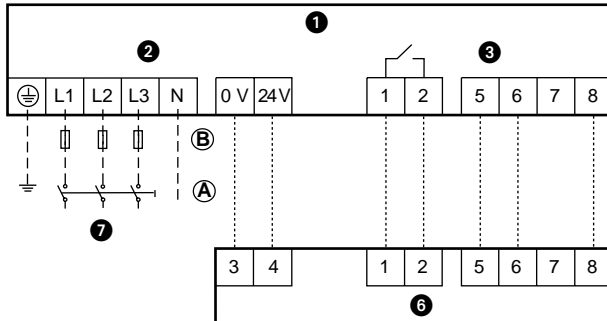
- 1 small screwdriver
- 7-8 x 0,5 mm<sup>2</sup> multiple cables, with double insulation. Suggested type: H03VV-F.

# Remote controller

## Wiring diagrams

### Three-phase unit with accessory remote control

**30RA005-015**

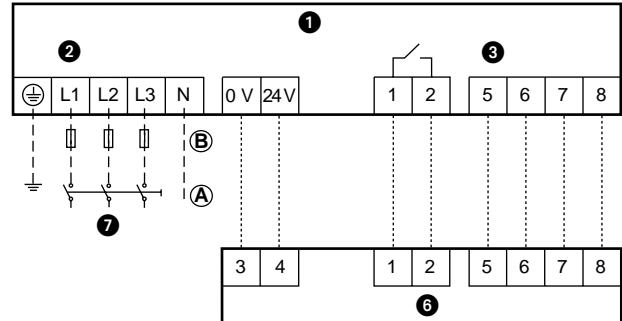


- ① Unit electrical panel
- ② Terminal blocks
- ③ Electronic board connectors
- ④ Remote control
- ⑤ Power supply 400 V 3N~ 50 Hz
- Ⓐ Main switch
- Ⓑ Time-delay fuse or circuit breaker (see table III "Electrical data" - 30RA/30RH manual).

#### Terminal block legend, three-phase models

- ⊕ Earth.
- L Live power supply.
- L1 Live power supply.
- L2 Live power supply.
- L3 Live power supply.
- N Neutral power supply.

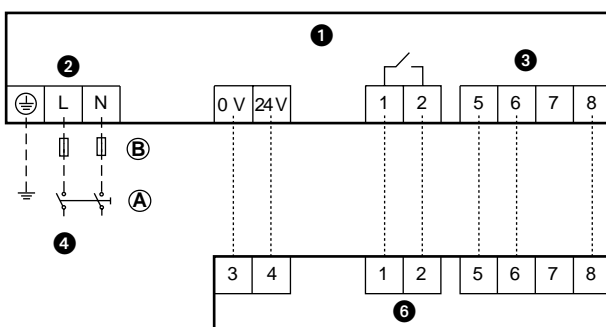
**30RH005-013**



- ① Unit electrical panel
- ② Terminal blocks
- ③ Electronic board connectors
- ④ Remote control
- ⑤ Power supply 400 V 3N~ 50 Hz
- Ⓐ Main switch
- Ⓑ Time-delay fuse or circuit breaker (see table III "Electrical data" - 30RA/30RH manual).

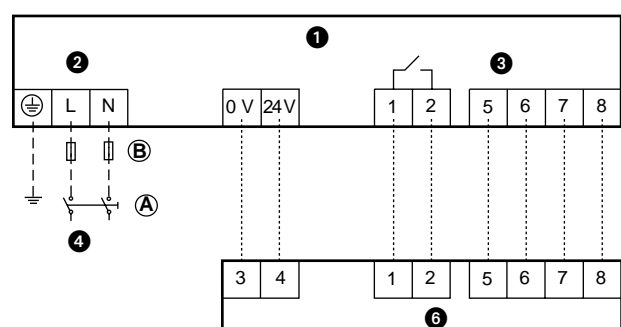
### Single-phase unit with accessory remote control

**30RA005-015**



- ① Unit electrical panel
- ② Terminal blocks
- ③ Electronic board connectors
- ④ Remote control
- ⑤ Power supply 230 V 1ph 50 Hz
- Ⓐ Main switch
- Ⓑ Time-delay fuse or circuit breaker (see table III "Electrical data" - 30RA/30RH manual).

**30RH005-013**



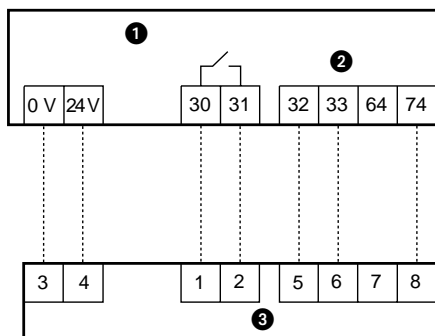
- ① Unit electrical panel
- ② Terminal blocks
- ③ Electronic board connectors
- ④ Remote control
- ⑤ Power supply 230 V 1ph 50 Hz
- Ⓐ Main switch
- Ⓑ Time-delay fuse or circuit breaker (see table III "Electrical data" - 30RA/30RH manual).

# Remote controller

## Wiring diagrams and Troubleshooting

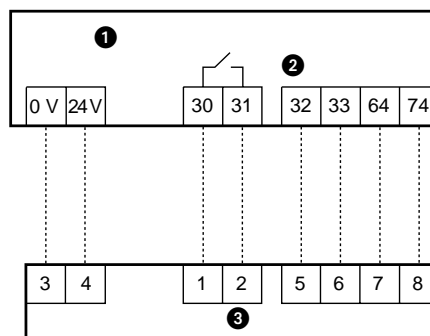
### Single-phase unit / Three-phase unit with accessory remote control

**30RA017-033**



- ① Unit electrical panel
- ② Electronic board connectors
- ③ Remote control

**30RH017-033**



- ① Unit electrical panel
- ② Electronic board connectors
- ③ Remote control

## Troubleshooting

Symptom	Possible cause	Action required	Solution
LED fault	1) miswiring of the 24 volt power to remote controller control.	1) Verify that 30RA/30RH unit is connected to the proper terminals of the controller.  Reference Installation cable paragraph for correct connections	After disconnecting the power, correct the wiring problem and restart the power.
	2) Power not online	1) Check that the unit main power is connected.	After verifying the wiring to the remote controller, restart the unit power.
	3) No 24 volt supply to terminal block.	1) Check the 0-24 connection on the terminal block in the 30RA/30RH unit.	After disconnecting the power, correct the wiring problem and restart the power.
24 volts applied to remote controller at the correct terminals but unit does not operate	1) The remote controller is damaged.		Change the remote controller and restart the power.



Via R. Sanzio, 9 - 20058 Villasanta (MI) Italy - Tel. 039/3636.1

---

The manufacturer reserves the right to change any product specifications without notice.